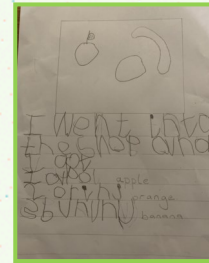
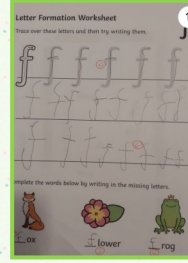
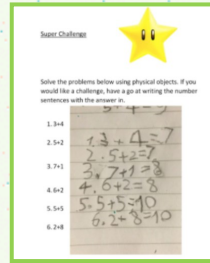
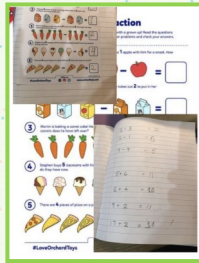
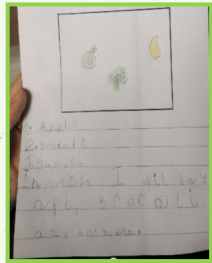
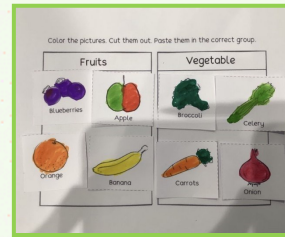


Wheat Aleph and Wheat Bet

We have had a busy week this week in Reception! Our theme this week has been all about food from around the world. In Literacy we had a go at writing our own shopping list - the children did an excellent job. Our topic lesson was to learn about having a balanced diet and then we created a healthy plate of food. In Phonics we are continuing with our phase 3 sounds and this week we focused on the sounds y, z/zz and qu. The children have also had their Maths hats on this week and been working on their addition sums. As well as this, it has been wonderful to have so many of the children joining the live lessons and seeing their smiling faces. Well done everyone for another hardworking week!



Year 1

Barley Aleph and Barley Bet

We have absolutely loved the start of the live sessions this week and we hope you all have too! There has been live yoga led by Miss Cohen, riddle hunts, quizzes, arts and crafts and much more... Every week we are even more blown away by the hard work of you all, give yourself a huge pat on the back! Bring on next week!



We had made this on the weekend because of the transport topic last week



Olive Aleph

This week Year 2 have been continuing with The Great Kapok Tree story and have been learning how to write a persuasive letter with wonderful rhetorical questions. In Maths, we have moved on to division through sharing and grouping and in Science we have been looking at plants through our windows. We have been thinking about mindfulness and even found time for a session of yoga!

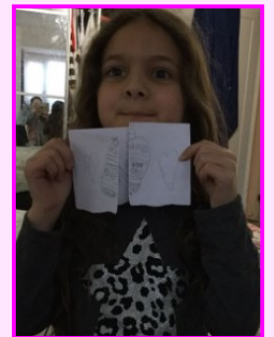
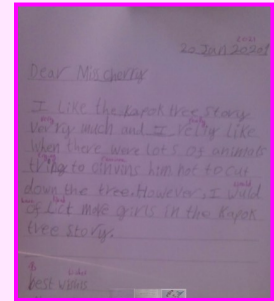
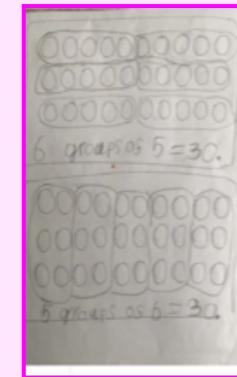
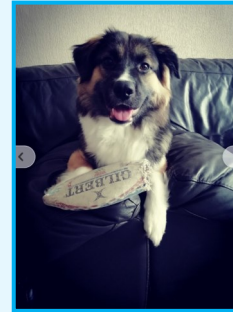
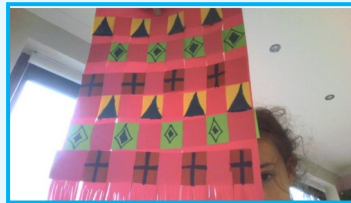
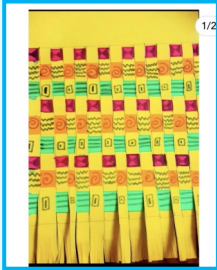


Fig Aleph

This week Fig class participated in live registration each day enjoying team activities as a class. We continued with our English story 'Too Much Talk' and introduced a new book 'Anansi the Spider'. In Maths we used pounds and pence to calculate values. For our topic lesson this week we looked at 'What do Plants Need to Grow?'.



Can you guess Max's dog's name?

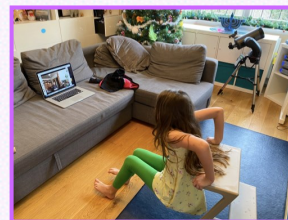
Year 4

Pomegranate Aleph and Pomegranate Bet

This week Year 4 has been busy finishing up their news articles inspired by the book Krindlekrax. They have focused on creating interesting headlines, adding exciting vocabulary and proofreading their work.

In Maths, Year 4 just finished their multiplication and division learning block, where they practised the most efficient ways to solve multiplication and division word problems, explored factor pairs and worked on multiplying/dividing up to 3 digit numbers.

Some other activities Year 4 has been busy with: painting and drawing beautiful pictures using only blue, coding on Scratch Jr, creating their own P.E routines, improvising and storytelling using musical instruments, learning about the properties of gases and practising Hebrew letters.



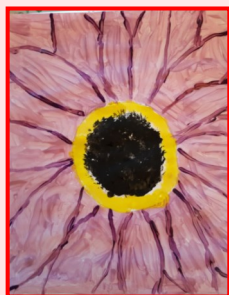
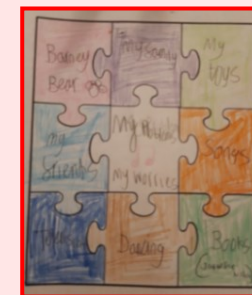
Olive Aleph

This week we have been writing stories that we are going to be turning into play scripts. In Maths we have been looking at fractions and converting from improper fraction to mixed numbers. Ms Novak has set us a lovely art activity looking at the art work of Georgia O'Keefe and then creating our own. In PSHE we have been looking at our perspective of the world and creating jigsaws to represent these. We have also started our twice daily live sessions with a focus on reading. These have been really successful and it's been great to see everyone every day! Star of the week this week was Blimi who received this for all of her hard work on Seesaw as well making sure to reply to improvements.



STAR OF THE WEEK!

BLIMI!!



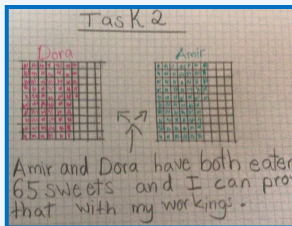
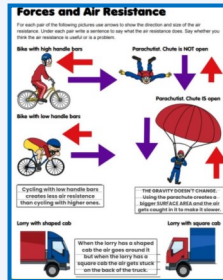


Date Aleph

Year 6 have been super busy this week. In Maths, we have been learning about percentages and how to find equivalent fractions and decimals. We've been absolutely brilliant at creating visual

representations to support our calculations. In Topic, we have been continuing our unit 'World War 2' and this week, we learnt all about rationing. We had some interesting discussions about this and even created food lists for our family to see what we would have been able to eat in those times. This was also another chance for us to show off our Maths skills! In English, we have been continuing with Letters From The

Lighthouse and answering lots of inference questions. We can't wait to read more and find out what happens next! In Science, we have been learning about air resistance and applying our learning to different scenarios.



Ratting 1 rat			
Weight	1.0kg	1.5kg	2.0kg
Length	1.0m	1.5m	2.0m
Area	1.0m ²	1.5m ²	2.0m ²
Volume	1.0m ³	1.5m ³	2.0m ³
Mass	1.0kg	1.5kg	2.0kg
Weight	1.0kg	1.5kg	2.0kg
Length	1.0m	1.5m	2.0m
Area	1.0m ²	1.5m ²	2.0m ²
Volume	1.0m ³	1.5m ³	2.0m ³
Mass	1.0kg	1.5kg	2.0kg
Weight	1.0kg	1.5kg	2.0kg
Length	1.0m	1.5m	2.0m
Area	1.0m ²	1.5m ²	2.0m ²
Volume	1.0m ³	1.5m ³	2.0m ³
Mass	1.0kg	1.5kg	2.0kg
Weight	1.0kg	1.5kg	2.0kg
Length	1.0m	1.5m	2.0m
Area	1.0m ²	1.5m ²	2.0m ²
Volume	1.0m ³	1.5m ³	2.0m ³
Mass	1.0kg	1.5kg	2.0kg
Weight	1.0kg	1.5kg	2.0kg
Length	1.0m	1.5m	2.0m
Area	1.0m ²	1.5m ²	2.0m ²
Volume	1.0m ³	1.5m ³	2.0m ³
Mass	1.0kg	1.5kg	2.0kg
Weight	1.0kg	1.5kg	2.0kg
Length	1.0m	1.5m	2.0m
Area	1.0m ²	1.5m ²	2.0m ²
Volume	1.0m ³	1.5m ³	2.0m ³
Mass	1.0kg	1.5kg	2.0kg
Weight	1.0kg	1.5kg	2.0kg
Length	1.0m	1.5m	2.0m
Area	1.0m ²	1.5m ²	2.0m ²
Volume	1.0m ³	1.5m ³	2.0m ³
Mass	1.0kg	1.5kg	2.0kg
Weight	1.0kg	1.5kg	2.0kg
Length	1.0m	1.5m	2.0m
Area	1.0m ²	1.5m ²	2.0m ²
Volume	1.0m ³	1.5m ³	2.0m ³
Mass	1.0kg	1.5kg	2.0kg
Weight	1.0kg	1.5kg	2.0kg
Length	1.0m	1.5m	2.0m
Area	1.0m ²	1.5m ²	2.0m ²
Volume	1.0m ³	1.5m ³	2.0m ³
Mass	1.0kg	1.5kg	2.0kg
Weight	1.0kg	1.5kg	2.0kg
Length	1.0m	1.5m	2.0m
Area	1.0m ²	1.5m ²	2.0m ²
Volume	1.0m ³	1.5m ³	2.0m ³
Mass	1.0kg	1.5kg	2.0kg
Weight	1.0kg	1.5kg	2.0kg
Length	1.0m	1.5m	2.0m
Area	1.0m ²	1.5m ²	2.0m ²
Volume	1.0m ³	1.5m ³	2.0m ³
Mass	1.0kg	1.5kg	2.0kg
Weight	1.0kg	1.5kg	2.0kg
Length	1.0m	1.5m	2.0m
Area	1.0m ²	1.5m ²	2.0m ²
Volume	1.0m ³	1.5m ³	2.0m ³
Mass	1.0kg	1.5kg	2.0kg
Weight	1.0kg	1.5kg	2.0kg
Length	1.0m	1.5m	2.0m
Area	1.0m ²	1.5m ²	2.0m ²
Volume	1.0m ³	1.5m ³	2.0m ³
Mass	1.0kg	1.5kg	2.0kg
Weight	1.0kg	1.5kg	2.0kg
Length	1.0m	1.5m	2.0m
Area	1.0m ²	1.5m ²	2.0m ²
Volume	1.0m ³	1.5m ³	2.0m ³
Mass	1.0kg	1.5kg	2.0kg
Weight	1.0kg	1.5kg	2.0kg
Length	1.0m	1.5m	2.0m
Area	1.0m ²	1.5m ²	2.0m ²
Volume	1.0m ³	1.5m ³	2.0m ³
Mass	1.0kg	1.5kg	2.0kg
Weight	1.0kg	1.5kg	2.0kg
Length	1.0m	1.5m	2.0m
Area	1.0m ²	1.5m ²	2.0m ²
Volume	1.0m ³	1.5m ³	2.0m ³
Mass	1.0kg	1.5kg	2.0kg
Weight	1.0kg	1.5kg	2.0kg
Length	1.0m	1.5m	2.0m
Area	1.0m ²	1.5m ²	2.0m ²
Volume	1.0m ³	1.5m ³	2.0m ³
Mass	1.0kg	1.5kg	2.0kg
Weight	1.0kg	1.5kg	2.0kg
Length	1.0m	1.5m	2.0m
Area	1.0m ²	1.5m ²	2.0m ²
Volume	1.0m ³	1.5m ³	2.0m ³
Mass	1.0kg	1.5kg	2.0kg
Weight	1.0kg	1.5kg	2.0kg
Length	1.0m	1.5m	2.0m
Area	1.0m ²	1.5m ²	2.0m ²
Volume	1.0m ³	1.5m ³	2.0m ³
Mass	1.0kg	1.5kg	2.0kg
Weight	1.0kg	1.5kg	2.0kg
Length	1.0m	1.5m	2.0m
Area	1.0m ²	1.5m ²	2.0m ²
Volume	1.0m ³	1.5m ³	2.0m ³
Mass	1.0kg	1.5kg	2.0kg
Weight	1.0kg	1.5kg	2.0kg
Length	1.0m	1.5m	2.0m
Area	1.0m ²	1.5m ²	2.0m ²
Volume	1.0m ³	1.5m ³	2.0m ³
Mass	1.0kg	1.5kg	2.0kg
Weight	1.0kg	1.5kg	2.0kg
Length	1.0m	1.5m	2.0m
Area	1.0m ²	1.5m ²	2.0m ²
Volume	1.0m ³	1.5m ³	2.0m ³
Mass	1.0kg	1.5kg	2.0kg
Weight	1.0kg	1.5kg	2.0kg
Length	1.0m	1.5m	2.0m
Area	1.0m ²	1.5m ²	2.0m ²
Volume	1.0m ³	1.5m ³	2.0m ³
Mass	1.0kg	1.5kg	2.0kg
Weight	1.0kg	1.5kg	2.0kg
Length	1.0m	1.5m	2.0m
Area	1.0m ²	1.5m ²	2.0m ²
Volume	1.0m ³	1.5m ³	2.0m ³
Mass	1.0kg	1.5kg	2.0kg
Weight	1.0kg	1.5kg	2.0kg
Length	1.0m	1.5m	2.0m
Area	1.0m ²	1.5m ²	2.0m ²
Volume	1.0m ³	1.5m ³	2.0m ³
Mass	1.0kg	1.5kg	2.0kg
Weight	1.0kg	1.5kg	2.0kg
Length	1.0m	1.5m	2.0m
Area	1.0m ²	1.5m ²	2.0m ²
Volume	1.0m ³	1.5m ³	2.0m ³
Mass	1.0kg	1.5kg	2.0kg
Weight	1.0kg	1.5kg	2.0kg
Length	1.0m	1.5m	2.0m
Area	1.0m ²	1.5m ²	2.0m ²
Volume	1.0m ³	1.5m ³	2.0m ³
Mass	1.0kg	1.5kg	2.0kg
Weight	1.0kg	1.5kg	2.0kg
Length	1.0m	1.5m	2.0m
Area	1.0m ²	1.5m ²	2.0m ²
Volume	1.0m ³	1.5m ³	2.0m ³
Mass	1.0kg	1.5kg	2.0kg
Weight	1.0kg	1.5kg	2.0kg
Length	1.0m	1.5m	2.0m
Area	1.0m ²	1.5m ²	2.0m ²
Volume	1.0m ³	1.5m ³	2.0m ³
Mass	1.0kg	1.5kg	2.0kg
Weight	1.0kg	1.5kg	2.0kg
Length	1.0m	1.5m	2.0m
Area	1.0m ²	1.5m ²	2.0m ²
Volume	1.0m ³	1.5m ³	2.0m ³
Mass	1.0kg	1.5kg	2.0kg
Weight	1.0kg	1.5kg	2.0kg
Length	1.0m	1.5m	2.0m
Area	1.0m ²	1.5m ²	2.0m ²
Volume	1.0m ³	1.5m ³	2.0m ³
Mass	1.0kg	1.5kg	2.0kg
Weight	1.0kg	1.5kg	2.0kg
Length	1.0m	1.5m	2.0m
Area	1.0m ²	1.5m ²	2.0m ²
Volume	1.0m ³	1.5m ³	2.0m ³
Mass	1.0kg	1.5kg	2.0kg
Weight	1.0kg	1.5kg	2.0kg
Length	1.0m	1.5m	2.0m
Area	1.0m ²	1.5m ²	2.0m ²
Volume	1.0m ³	1.5m ³	2.0m ³
Mass	1.0kg	1.5kg	2.0kg
Weight	1.0kg	1.5kg	2.0kg
Length	1.0m	1.5m	2.0m
Area	1.0m ²	1.5m ²	2.0m ²
Volume	1.0m ³	1.5m ³	2.0m ³
Mass	1.0kg	1.5kg	2.0kg
Weight	1.0kg	1.5kg	2.0kg
Length	1.0m	1.5m	2.0m
Area	1.0m ²	1.5m ²	2.0m ²
Volume	1.0m ³	1.5m ³	2.0m ³
Mass	1.0kg	1.5kg	2.0kg
Weight	1.0kg	1.5kg	2.0kg
Length	1.0m	1.5m	2.0m
Area	1.0m ²	1.5m ²	2.0m ²
Volume	1.0m ³	1.5m ³	2.0m ³
Mass	1.0kg	1.5kg	2.0kg
Weight	1.0kg	1.5kg	2.0kg
Length	1.0m	1.5m	2.0m
Area	1.0m ²	1.5m ²	2.0m ²
Volume	1.0m ³	1.5m ³	2.0m ³
Mass	1.0kg	1.5kg	2.0kg
Weight	1.0kg	1.5kg	2.0kg
Length	1.0m	1.5m	2.0m
Area	1.0m ²	1.5m ²	2.0m ²
Volume	1.0m ³	1.5m ³	2.0m ³
Mass	1.0kg	1.5kg	2.0kg
Weight	1.0kg	1.5kg	2.0kg
Length	1.0m	1.5m	2.0m
Area	1.0m ²	1.5m ²	2.0m ²
Volume	1.0m ³	1.5m ³	2.0m ³
Mass	1.0kg	1.5kg	2.0kg
Weight	1.0kg	1.5kg	2.0kg
Length	1.0m	1.5m	2.0m
Area	1.0m ²	1.5m ²	2.0m ²
Volume	1.0m ³	1.5m ³	2.0m ³
Mass	1.0kg	1.5kg	2.0kg
Weight	1.0kg	1.5kg	2.0kg
Length	1.0m	1.5m	2.0m
Area	1.0m ²	1.5m ²	2.0m ²
Volume	1.0m ³	1.5m ³	2.0m ³
Mass	1.0kg	1.5kg	2.0kg
Weight	1.0kg	1.5kg	2.0kg
Length	1.0m	1.5m	2.0m
Area	1.0m ²	1.5m ²	2.0m ²
Volume	1.0m ³	1.5m ³	2.0m ³
Mass	1.0kg	1.5kg	2.0kg
Weight	1.0kg	1.5kg	2.0kg
Length	1.0m	1.5m	2.0m
Area	1.0m ²	1.5m ²	2.0m ²
Volume	1.0m ³	1.5m ³	2.0m ³
Mass	1.0kg	1.5kg	2.0kg
Weight	1.0kg	1.5kg	2.0kg
Length	1.0m	1.5m	2.0m
Area	1.0m ²	1.5m ²	2.0m ²
Volume	1.0m ³	1.5m ³	2.0m ³
Mass	1.0kg	1.5kg	2.0kg
Weight	1.0kg	1.5kg	2.0kg
Length	1.0m	1.5m	2.0m
Area	1.0m ²	1.5m ²	2.0m ²
Volume	1.0m ³	1.5m ³	2.0m ³
Mass	1.0kg	1.5kg	2.0kg
Weight	1.0kg	1.5kg	2.0kg
Length	1.0m	1.5m	2.0m
Area	1.0m ²	1.5m ²	2.0m ²
Volume	1.0m ³	1.5m ³	2.0